

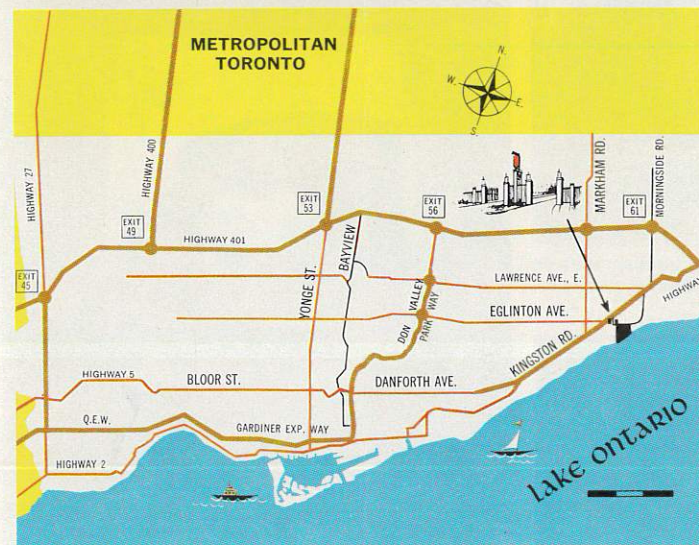
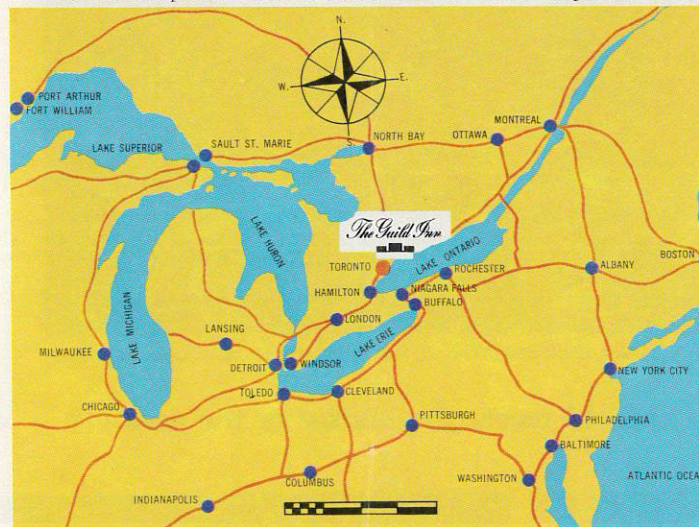
The Studio. Used for many years by creative craftsmen, the Studio is now a delightful haven for receptions, and conference meetings. The old charm is preserved in wood panelled walls, unique fireplaces and a winding staircase for the traditional tossing of the bride's bouquet.



The Guild's natural charm is complemented by modern architecture in this view of the new wing from the pool. These sweeping stairs with their wrought-iron balustrade lead from a broad patio overlooking the swimming pool and gardens and off to the woods and lake. Your camera is a must at The Guild.



Watch for these historic gates on the Kingston Road, Highway 2, Toronto, located on the Map below. For further information write or telephone..



The Guild Inn
 Guildwood Parkway
 Scarborough, Ontario, Canada M1E 1P6
 (Area Code 416) 261-3331

The Guild Inn

TORONTO ONTARIO CANADA



Toronto's Internationally Famous
 Lakefront Estate Hotel

The Guild Inn is many things. It is 50 private acres of trees, gardens, fountains and lawns. It is a treasureland of early Canadiana. It is a blend of Old World character with the exciting new. It is your own private room with a balcony view of expansive gardens and the glorious vista of Lake Ontario blue. It is a country retreat only minutes away from a great metropolis. The Guild is many things. Most of all it is a place of inspiration for memories to be cherished. Join us on these pages for a tour of the beauties, the facilities and the friendliness that are yours to share as a guest of The Guild Inn.



The main entrance conveys the feeling of a Country Inn set in a world apart. The circular drive is shaded by trees and bordered with flowers.



The Wishing Well. Long retired from its original duties, this old well now welcomes your wishes. Donations are given to charity.



A graceful Swan, sculptured from the original keystone of Old London's Burlington Arcade, forms the centrepiece of this delightful illuminated fountain.



The South Walk leads past towering trees, the Cedar Maze and outdoor sculpture, to the very edge of the famous Scarborough Bluffs.



The Old Log Cabin still stands where it was built by the first settler who received the land as a Crown Grant from King George III.



The Guild Collection of sculpture turns woodland trails into tours of discovery. This study in marble is called "Musidora".



The Scarborough Bluffs, rising 200 feet above Lake Ontario, are known by geologists throughout the world for the information they yielded on the earth's glacial history.



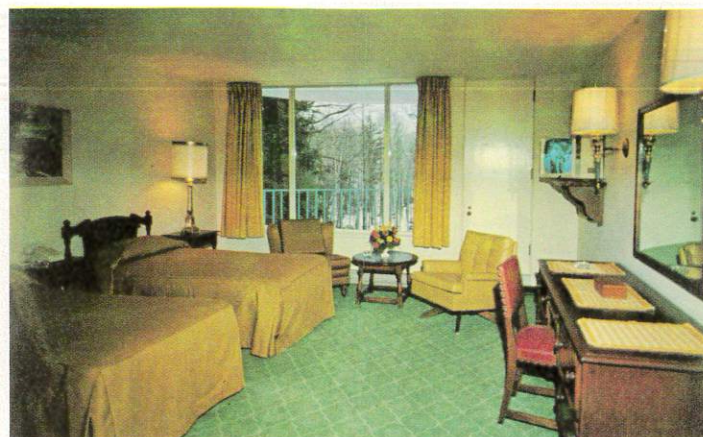
More than 60 varieties of trees, some remaining from the virgin forest, enrich the Guild estate with lush foliage, and encourage a colourful variety of birds.

The Guild Inn has a timeless charm so welcome in these days of hurry



Over 100 Guest rooms in a secluded setting of spacious grandeur.

The Guild Inn: Where the character of the old meets the luxury of the new



Guest rooms in the new wing have picture windows; private balconies; television; radio; Tudor furniture; big upholstered rockers; tasteful interiors, and sunlamps in the bathrooms. Electric heating and central air-conditioning add to your comfort.



The Guild's Dining Rooms are renowned for superb cuisine and attentive service. There's a rich warmth in furnishings and decor that give a delightful atmosphere.



The Gift Shop has an intriguing collection of Canadian crafts and gifts from abroad. Hand-loomed items, wood carvings and pottery, are a feature in this cozy shop.



Some of The Guild's most delightful rooms are located in the original building. Much of the furniture was designed and built by craftsmen at the Guild. Everything for your comfort.



The Guild's elevator lobby connects the new with the old. Even the quiet elevators are richly panelled in Tudor Oak.



The Swimming Pool is a popular meeting spot on summer days and evenings, and a family favourite for outdoor fun.



Dining with a view is a Guild tradition, with wide vistas of gardens, woods, lawns and lake.



The original Entrance Hall retains the character of an English Manor, with its broad stairs, oak beaming, wrought iron chandeliers and oil paintings.



The Children's Playhouse is a miniature chalet and a year-around delight.



Private balconies are your invitation to the sights and sounds of nature. Enjoy the songs of happy birds, the glint of morning dew, the warmth of the midday sun, and the moonlight on rippling waters of the lake. Yours at the Guild.



The Foyer has a charm all its own, typical of the warmth that is part of the Guild tradition. Paintings, sculpture and rare examples of furniture all add to an atmosphere that is The Guild's alone and yours to enjoy.